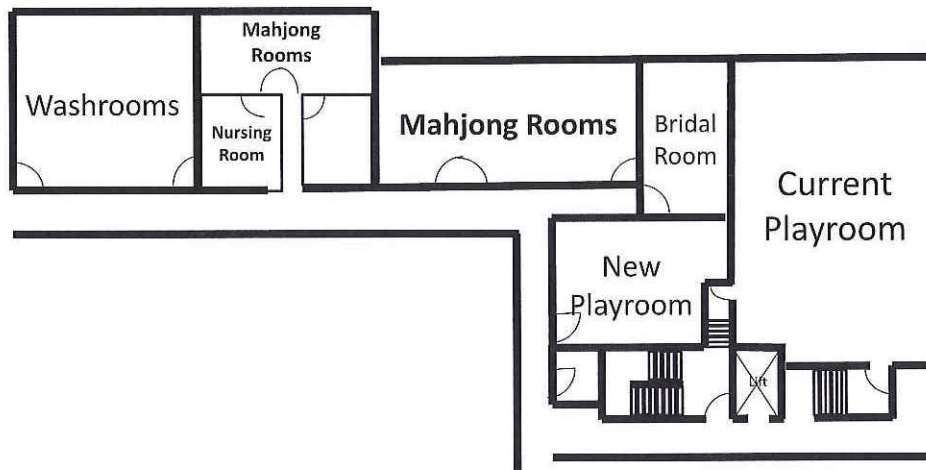


NOTICE

Playroom to be Resited

1. The Playroom will be resited to be closer to the Nursing Room and washrooms. Please refer to the following schematic drawing for the Playroom's new location.
2. The facility will be closed from **14 Jan (Mon) to 13 Mar 2019 (Wed)** in preparation for the move.
3. The new Playroom will be designed to promote parent-child bonding and include new offerings that keep up with our young members' evolving edutainment needs.
4. Members may write to events@sswimclub.org.sg with suggestions to improve the Playroom's experience.
5. We apologise for the inconvenience caused during the closure period.



Second floor, Main Building




CLUB MANAGEMENT
31 December 2018